

B.E.G. LUXOMAT®



New DALI-2 Multi-sensors for all your detection needs

DALI-2-BMS

The sensor specialist B.E.G. Brück Electronic GmbH offers many of its occupancy detectors now also as DALI-2 multi-sensors in addition to the 11-48V versions.

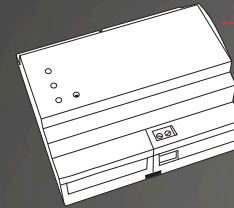
The DALI-2 multi-sensors offer the advantage over standard 24V multi-sensors that the 2-core DALI bus, which often exists already for the lighting, can be used.

The simplification is important: while a standard 24V multi-sensor often requires an own terminal as well as a separate supply line, a plurality of DALI-2-BMS sensors can be connected to one line, the number depending on the DALI power supply. DALI luminaires and DALI sensors share the bus.

The new DALI-2 standard offers the possibility to send sensor information such as movement, occupancy and light values without cyclical query in multi-master mode. This information is standardised so that B.E.G.'s DALI-2-BMS multi-sensors can be used with all DALI-2 compatible controllers.

Equipped with modern digital passive infrared sensors, the multi-sensors offer an excellent detection quality for movement and occupancy. The various multi-sensors, e.g. the small mini sensor „PICO“ with an installation depth of only 11mm, the super-flat PD11, or the high-bay detector PD4-DALI-2-BMS-GH offer detection ranges of up to 44m in diameter.

Light measurement with B.E.G.'s external light sensor is very reliable, and with the PD4-DALI-2-BMS-GH a constant light regulation is possible up to a mounting height of 16m.



DALI

DALI-2 controller from any manufacturer



PICO-DALI-2-BMS



PD2N-DALI-2-BMS



PD11-DALI-2-BMS-FLAT



LED panel luminaire with
B.E.G. DALI driver



PD4-DALI-2-BMS-GH



PD4N-DALI-2-BMS



PD4N-DALI-2-BMS-C

Features

- DALI control devices developed in compliance with IEC 62386 Parts 101, 103, 303 and 304
- Lighting control takes place in a centralised DALI-2-capable multi-master application controller from any manufacturer
- Operating voltage via DALI bus
- Large range for a wide variety of requirements
- Bright LED indication for quick localisation
- Exterior light sensors, some are orientable
- Commissioning and maintenance by systems integrator of the installed lighting control solution

Functions

- Addressable and usable according to IEC62386 parts 101, 103, 303 and 304
- Sends LUX values if required
- Sends information about room occupancy and motion detection if required
- Integrated hold time for room occupancy detection
- Polling support
- Various light measurement methods adjustable via "Memory banks" (depending on version)

Multi-sensor PD11-DALI-2-BMS-FLAT-FC

- Low profile DALI multi-sensor (visible height: 0,85 mm)
- Powered via DALI bus
- DALI multimaster technology according to IEC 62386 part 103
- Instance 0 provides information regarding occupancy and movement for the DALI-Bus according to IEC 62386 part 303
- Instance 1 provides LUX values for the DALI-Bus according to IEC 62386 part 304
- Parameterization is possible via mandatory Multimaster-Application-Controller. This controller must support IEC 62386 parts 101/103/303/304.
- Spring clips for quick and easy installation in suspended ceilings
- Includes lens shields and clamping ring for installation within luminaries.



Technical data

- Voltage: 10 - 22 V DC via DALI Bus
- Dimensions: Ø 52 x 48 mm
- Typ. power input: 4 mA
- Detection area: vertical 360°
- Range: max. Ø 9 m across
max. Ø 6 m towards
max. Ø 3 m seated
- Degree / class of protection: IP20 / Class II

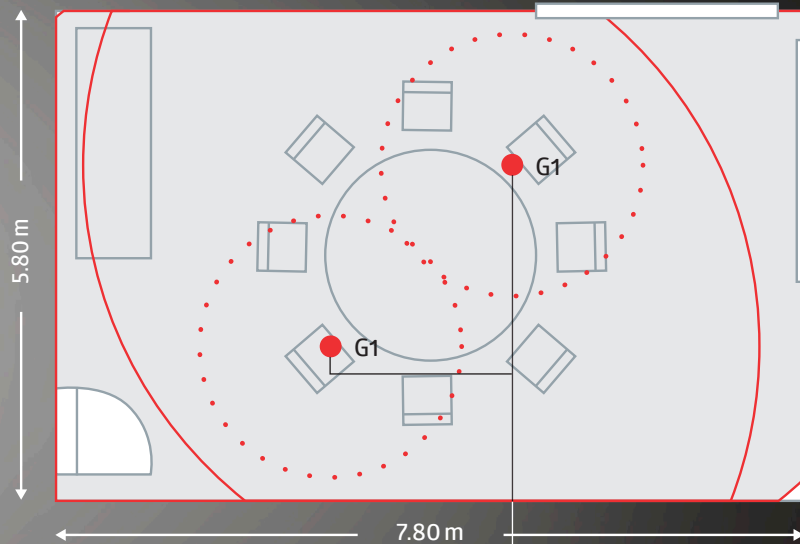
PD11-DALI-2-BMS-FLAT-FC 93330

Accessory

Cover ring PD11 Ø 52 mm, black	92537
Cover ring PD11 Ø 100 mm, white	92692
Square design frame PD11-FC, white	92994
In-wall mounting set 1 / PD11, white	92832
In-wall mounting set 2 / PD11, white	92833



Application example: Conference room



● Group 1
PD11-DALI-2-BMS-FLAT-FC

- Range walking across
- Range Seated (Presence detection)



Multi-sensor PICO-DALI-2-BMS-FC

- Mini DALI multi-sensor (installation depth: 11 mm)
- Powered via DALI bus
- DALI multimaster technology according to IEC 62386 part 103
- Instance 0 provides information regarding occupancy and movement for the DALI-Bus according to IEC 62386 part 303
- Instance 1 provides LUX values for the DALI-Bus according to IEC 62386 part 304
- Parameterization is possible via mandatory Multimaster-Application-Controller. This controller must support IEC 62386 parts 101/103/303/304.
- Designed for installation in luminaries and suspended lighting tracks.

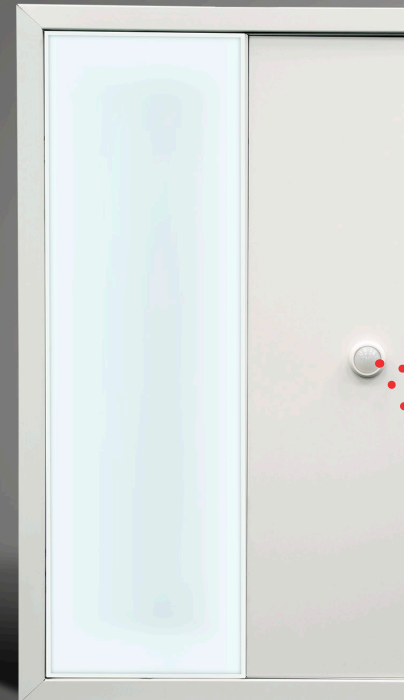


Technical data

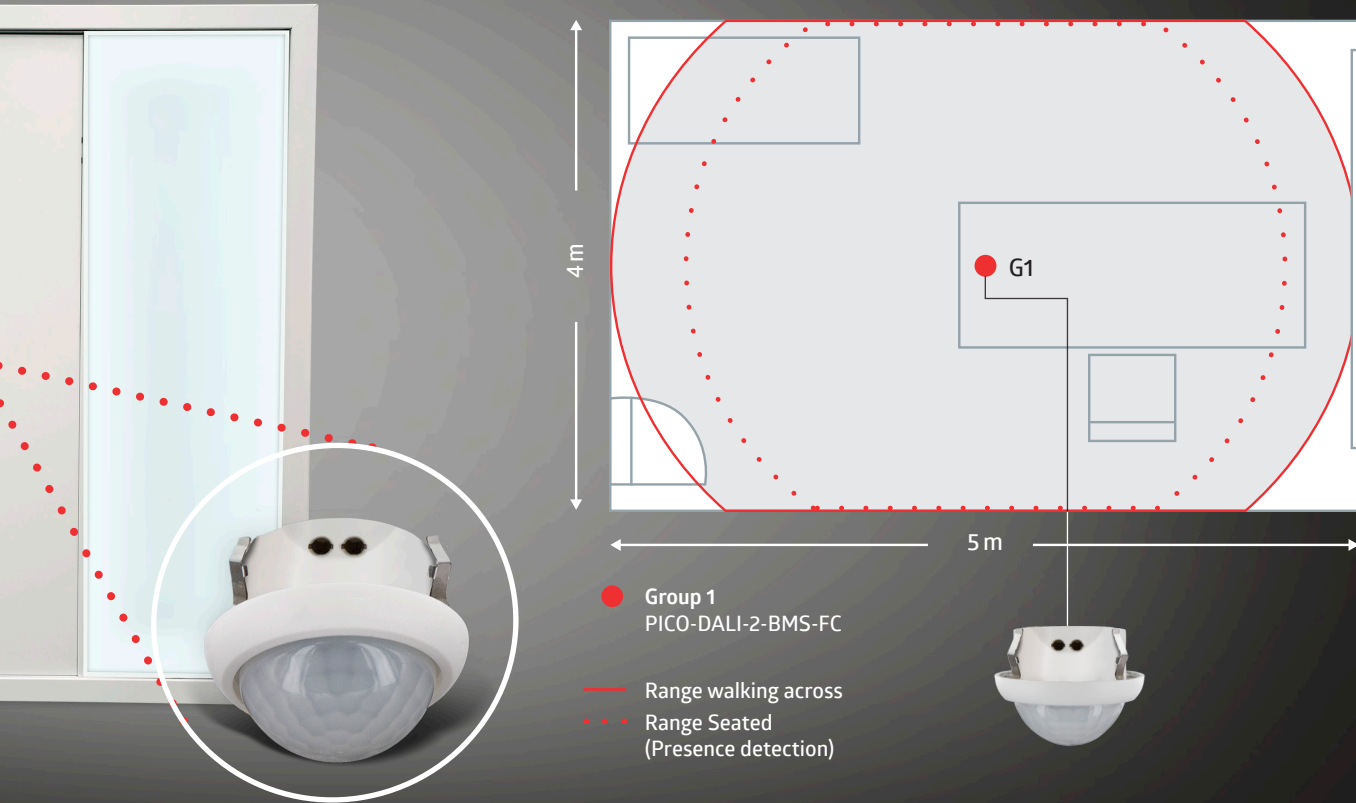
- Voltage: 10 - 22 V DC
via DALI Bus
- Dimensions: Ø 33 x 27 mm
- Typ. power input: 2 mA
- Detection area: vertical 360°
- Range: max. Ø 10 m across
max. Ø 6 m towards
max. Ø 4 m seated
- Degree /
class of protection: IP20 / Class II

PICO-DALI-2-BMS-FC

93924



Application example: Individual office



Multi-sensor PD2N-DALI-2-BMS-FC/-FM

- Medium-sized motion detection range DALI multisensor
- Powered via DALI bus
- DALI multimaster technology according to IEC 62386 part 103
- Instance 0 provides information regarding occupancy and movement for the DALI-Bus according to IEC 62386 part 303
- Instance 1 provides LUX values for the DALI-Bus according to IEC 62386 part 304
- Parameterization is possible via mandatory Multimaster-Application-Controller. This controller must support IEC 62386 parts 101/103/303/304.
- Mixed light measurement with internal and external light sensor



Technical data

- Voltage: 10 - 22 V DC via DALI Bus
- Dimensions: FC= Ø 83 x 55 mm
FM= Ø 106 x 42 mm
- Typ. power input: 6 mA
- Detection area: vertical 360°
- Range: max. Ø 10 m across
max. Ø 6 m towards
max. Ø 4 m seated
- Degree / class of protection: IP20 / Class II

PD2N-DALI-2-BMS-FC 93329

PD2N-DALI-2-BMS-FM 93337

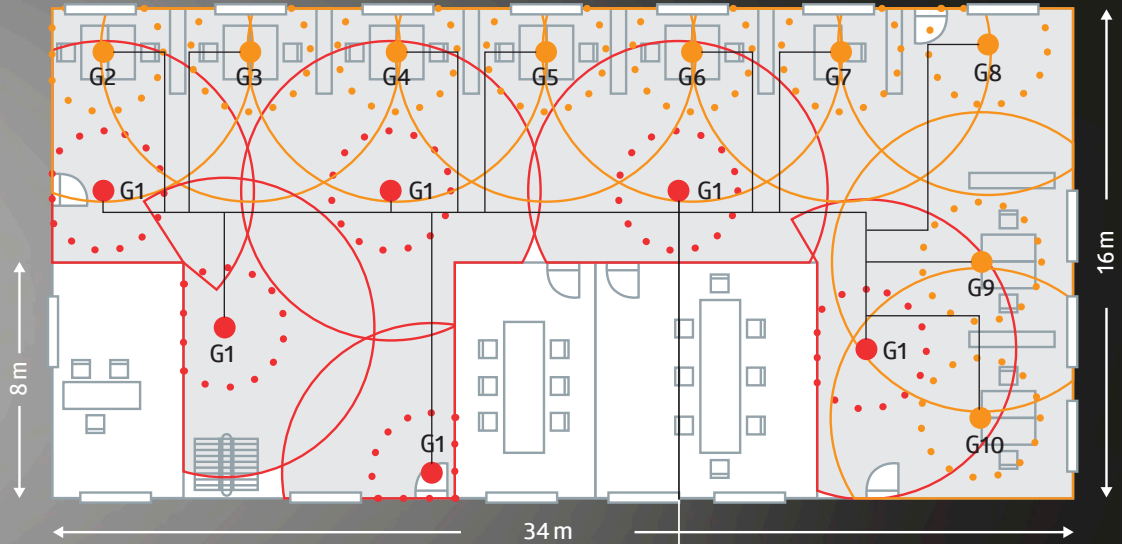
Accessory

SM Surface Mounting Set IP54 93307

Wire basket BSK (Ø 200 x 90 mm), white 92199



Application example: Open-plan office



- Group 1
PD2N-DALI-2-BMS-FC/-FM
- Group 2 - 10
PD2N-DALI-2-BMS-FC/-FM

- Range walking across
- Range Seated
(Presence detection)



Multi-sensor PD4N-DALI-2-BMS

- Wide motion detection range DALI multi-sensor
- Flush fitting or surface mount versions available.
- Powered via DALI bus
- DALI multimaster technology according to IEC 62386 part 103
- Instance 0 provides information regarding occupancy and movement for the DALI-Bus according to IEC 62386 part 303
- Instance 1 provides LUX values for the DALI-Bus according to IEC 62386 part 304
- Parameterization is possible via mandatory Multimaster-Application-Controller. This controller must support IEC 62386 parts 101/103/303/304.
- Mixed light measurement with internal and external light sensor

Technical data

- Voltage: 10 - 22 V DC
via DALI Bus
- Dimensions: FC= Ø 106 x 74 mm
- Typ. power input: 7 mA
- Detection area: vertical 360°
- Range: max. Ø 24 m across
max. Ø 8 m towards
max. Ø 6.4 m seated
- Degree /
class of protection: IP20 / Class II

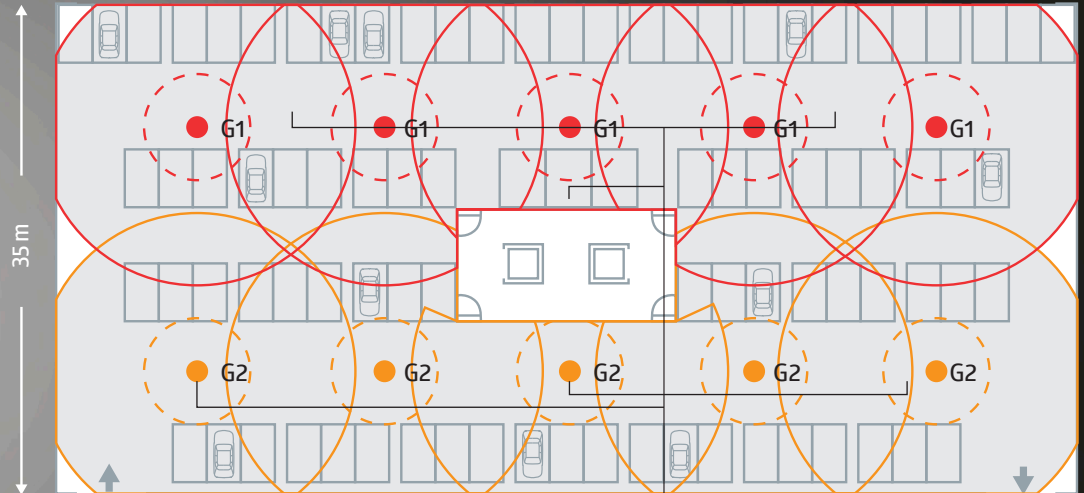
PD4N-DALI-2-BMS-FC 93311

Accessory

SM Surface Mounting Set IP54	93307
Wire basket BSK (Ø 200 x 90 mm), white	92199



Application example: Underground car park



- Group 1
PD4N-DALI-2-BMS-FC/-FM
- Group 2
PD4N-DALI-2-BMS-FC/-FM

- Range walking across
- - Range walking towards



Multi-sensor PD4N-DALI-2-BMS-C

- Wide motion detection range DALI multi-sensor with a special lens for corridor applications
- False ceiling or surface mount version available
- Powered via DALI bus
- DALI multimaster technology according to IEC 62386 part 103
- Instance 0 provides information regarding occupancy and movement for the DALI-Bus according to IEC 62386 part 303
- Instance 1 provides LUX values for the DALI-Bus according to IEC 62386 part 304
- Parameterization is possible via mandatory Multimaster-Application-Controller. This controller must support IEC 62386 parts 101/103/303/304.
- Mixed light measurement with internal and external light sensor

Technical data

- Voltage: 10 - 22 V DC
via DALI Bus
- Dimensions: FC= Ø 106 x 68 mm
- Typ. power input: 7 mA
- Detection area: vertical 360°
- Range: max. Ø 40 m across
max. Ø 20 m towards
- Degree /
class of protection: IP20 / Class II

PD4N-DALI-2-BMS-C-FC 93315

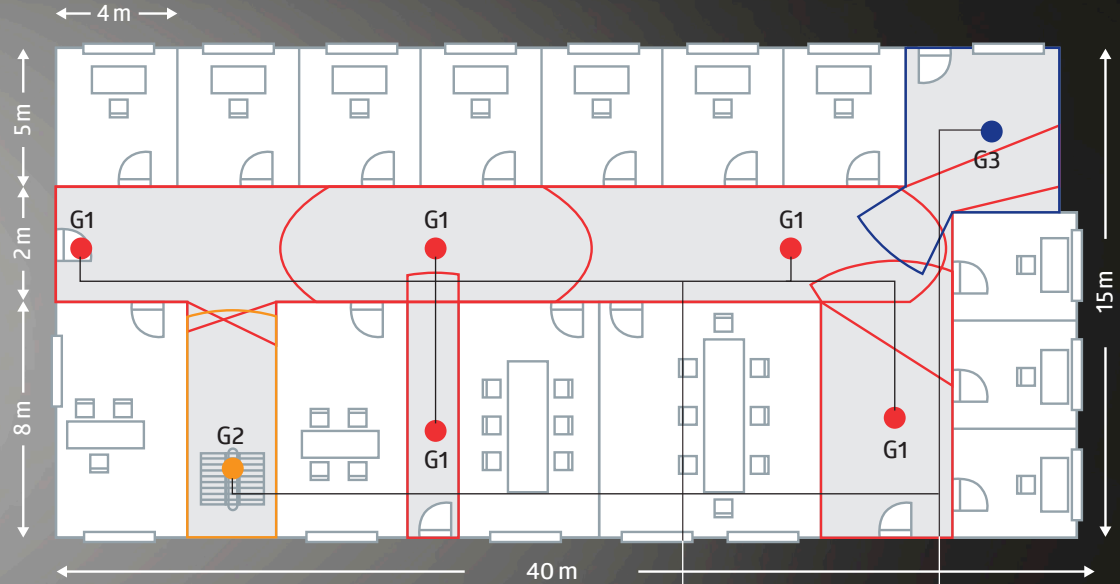
Accessory

SM Surface Mounting Set IP54 93307

Wire basket BSK (Ø 200 x 90 mm),
white 92199



Application example: Corridor



- Group 1
PD4N-DALI-2-BMS-C-FC/-FM
- Group 2
PD4N-DALI-2-BMS-FC/-FM
- Group 3
PD4N-DALI-2-BMS-C-FC/-FM
- Range across



Multi-sensor PD4-DALI-2-BMS-GH-SM

- Addressable DALI multi-sensor for surface mounting in large mounting heights
- External telescopic light sensor for a mounting height between 5 and 16m (mechanically adjustable) for measuring the light according to the application.
- Bright LED indication for commissioning
- Addressable according to IEC 62386 Part 103 (control device)
- Instance 0 provides information regarding occupancy and movement for the DALI-Bus according to IEC 62386 part 303
- Instance 1 provides LUX values for the DALI-Bus according to IEC 62386 part 304
- Parameterization is possible via mandatory Multimaster-Application-Controller. This controller must support IEC 62386 parts 101/103/303/304.



Technical data

- Voltage: 16 V DC
via DALI Bus
- Typ. power input: 7 mA
- Detection area: vertical 360°
- Range: max. Ø 44 m across
max. Ø 30 m towards
- Degree /
class of protection: IP54 / Class II
- When used in high-bay warehouses, care should be taken that, in the cross-aisles of the warehouse, detectors are installed that can detect movement only in the desired aisle locations, by using lens shields.

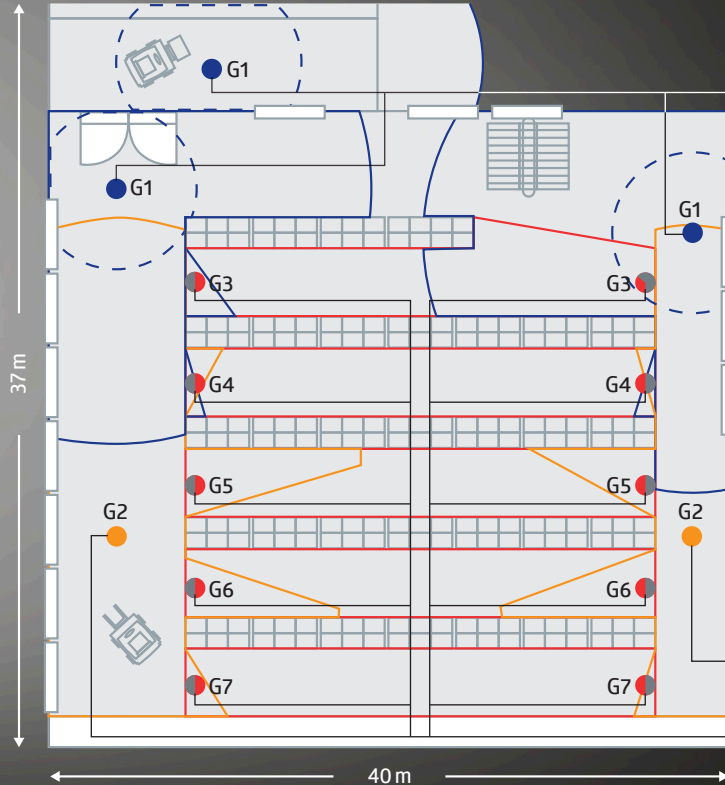
PD4-DALI-2-BMS-GH-SM 93025

Accessory

Wire basket BSK (Ø 200 x 90 mm), 92199
white



Application example: High-bay warehouse



- Group 1
PD4N-DALI-2-BMS-FC/-FM
- Group 2
PD4-DALI-2-BMS-GH-SM
- Group 3 - 7
PD4-DALI-2-BMS-GH-SM
with blinds
- Range walking across
- - Range walking towards



Multifunctional light management with DALI 2



B.E.G. UK Ltd

Apex Court – Grove House, Camphill Road T 0 870 850 5412 info@beguk.co.uk
West Byfleet, Surrey KT14 6SQ F 0 870 850 5413 beg-luxomat.com

Headquarter Germany (MENA-Region)

B.E.G. Brück Electronic GmbH

Gerberstraße 33 T +49 (0)2266-90121-0 info@beg.de
51789 Lindlar F +49 (0)2266-90121-50 beg-luxomat.com